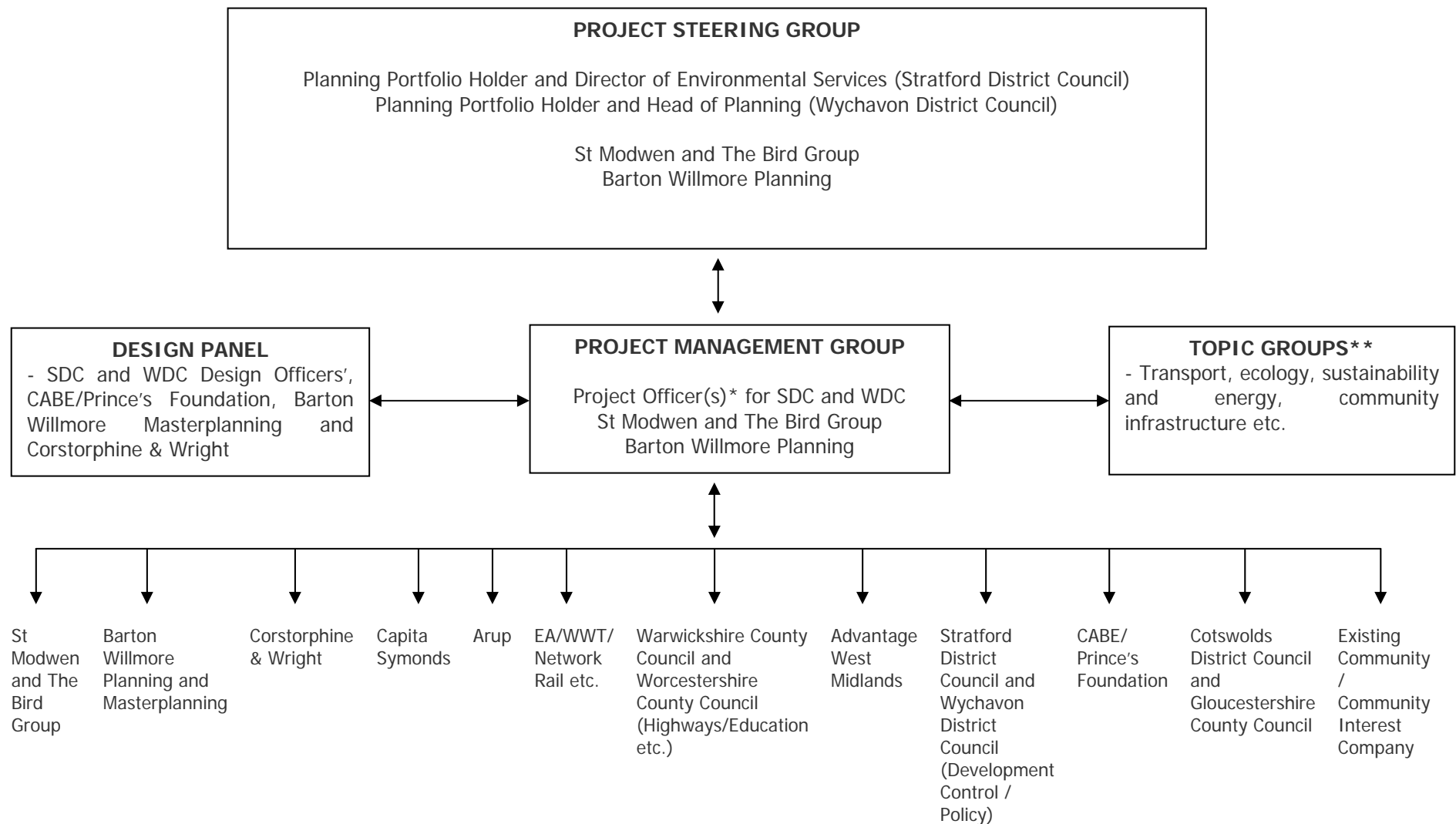


**MIDDLE QUINTON  
DRAFT PROPOSED DELIVERY STRUCTURE**



\* For example, as appointed by Stevenage Borough Council and North Herts District Council for west of Stevenage (an urban extension of 5,000 homes and associated development) and currently being appointed by Newark and Sherwood District Council in relation to delivery of their New Growth Point initiative. Barton Wilmore are involved with both of these projects.

\*\* Similar to the Garden City 21 initiative at West of Stevenage. This was an initiative developed by Hertfordshire County Council, Stevenage Borough Council, North Herts District Council, Persimmon Homes and the Countryside Commission (now Natural England). This partnership considered how the development could reach new standards of social, environmental and economic sustainability. The Topic Groups would cover an agreed set of topics and provide a focus for discussion and agreement by invited representatives to inform the masterplan's development.